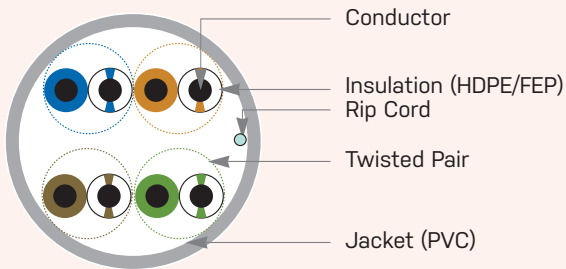
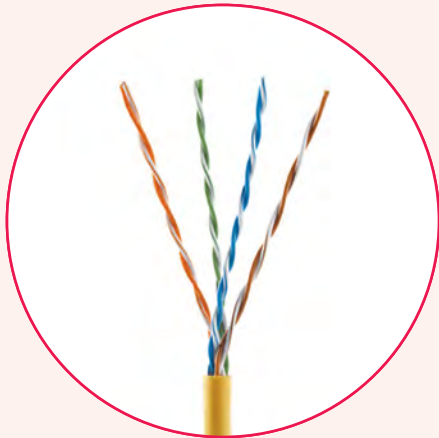


Category 5e 350MHz UTP

U5350-004-xxxx



Description

- Supports Fast Ethernet, Gigabit Ethernet, 155 Mbps ATM, Multimedia
- Simplified structured cabling solution preserves long-term network investment
- Every master reel is tested for electrical performance compliance
- Dual length marking in feet and meters from 1000 ft (305 m) to 0 ft (0 m)
- Lightweight, easy-pull Reelex II packaging eases installation

Application

- Horizontal Distribution & Backbone Cabling
- 155Mbps ATM, 100Mbps TP-PMD
- 10/100/1000BASE-T (IEEE 802.3)
- ISDN, ADSL
- PoE, PoE+ (IEEE 802.3af, IEEE 802.3at)

Certifications



Part Numbers

JACKET COLOR	DESCRIPTION	
	Enhanced Category 5e UTP Cable, 4-Pair, Riser Rated	Enhanced Category 5e UTP Cable, 4-Pair, Plenum Rated
Blue	U5350-004-RBL2	U5350-004-PBL2
White	U5350-004-RWH2	U5350-004-PWH2
Grey	U5350-004-RGY2	U5350-004-PGY2
Black	U5350-004-RBK2	U5350-004-PBK2
Yellow	U5350-004-RYL2	U5350-004-PYL2
Green	U5350-004-RGN2	U5350-004-PGN2
Red	U5350-004-RRD2	U5350-004-PRD2
Orange	U5350-004-ROR2	U5350-004-POR2
Violet	U5350-004-RV12	U5350-004-PV12

Performance Characteristics

Meet or exceed TIA-568-C.2 Category 5e requirements

FREQUENCY ³ (MHZ)	RETURN LOSS (RL) MINIMUM DB/100 M			INSERTION LOSS (ATTENUATION) MAXIMUM DB/100 M		
	TIA-568-C.2 Standard	U5350-R Typical	U5350-P Typical	TIA-568-C.2 Standard	U5350-R Typical	U5350-P Typical
1	20.0	27.30	27.23	2.0	1.88	1.85
4	23.0	32.46	30.89	4.1	3.75	3.71
10	25.0	35.73	35.47	6.5	6.02	5.97
16	25.0	37.29	36.36	8.2	7.66	7.60
20	25.0	38.84	36.42	9.3	8.60	8.53
31.25	23.6	35.93	34.67	11.7	10.82	10.74
62.5	21.5	33.22	33.37	17.0	15.55	15.47
100	20.1	29.53	31.27	22.0	19.84	19.84
200		29.28	30.39		25.44	21.34
300		28.50	29.50		26.00	22.00
350		27.78	28.26		26.81	22.47

FREQUENCY ³ (MHZ)	NEAR END CROSS TALK (NEXT) MINIMUM DB/100 M			EQUAL LEVEL FAR END CROSS TALK (ELFEXT) MINIMUM DB/100 M		
	TIA-568-C.2 Standard	U5350-R Typical	U5350-P Typical	TIA-568-C.2 Standard	U5350-R Typical	U5350-P Typical
1	65.3	74.32	74.20	63.8	76.96	71.71
4	56.3	72.68	69.65	51.8	68.53	70.38
10	50.3	63.04	62.56	43.8	62.59	65.12
16	47.2	62.02	57.86	39.7	58.18	57.53
20	45.8	57.67	55.20	37.8	57.85	56.97
31.25	42.9	56.72	53.36	33.9	54.83	54.34
62.5	38.4	56.38	52.00	27.9	52.09	49.87
100	35.3	49.38	49.24	23.8	46.60	46.49
200		38.94	41.99		43.13	45.98
300		36.00	41.95		42.50	42.00
350		35.25	41.91		42.08	41.41

³Value above 100Mhz are for informational purposes only

Technical Details

ITEM	UNIT	RISER	PLENUM
Conductor DC Resistance	Ohms/100 m	9.38	9.38
Resistance Unbalance	%	5	5
Mutual Capacitance	nF/100 m	5.6	5.6
Capacitance Unbalance	pF/100 m	330	330
Delay Skew	ns	45	45
Nominal Velocity of Propagation	%	67	70
Operating Temperature	°F (°C)	-4 to +140 (-20 to +60)	-4 to +140 (-20 to +60)
Storage Temperature	°F (°C)	-4 to +176 (-20 to +80)	-4 to +176 (-20 to +80)
Bending Radius		4 x Cable diameter	4 x Cable diameter
Packaging:	Type	1 kft (305 m)	Reelex II
	Weight	lb/kft (kg/km)	17 (25)
	Packages Per Pallet		36
Materials:	Conductors	24 AWG, Solid copper	24 AWG, Solid copper
	Insulation	in (mm)	0.035 (0.90), HDPE
	Jacket	in (mm)	0.193 (4.9), PVC
Approvals:	Safety	UL 444, UL 1666	UL 444, NFPA 262
	Performance	ANSI/TIA-568-C.2 "Balanced Twisted-Pair Telecommunications Cabling and Components Standards"	